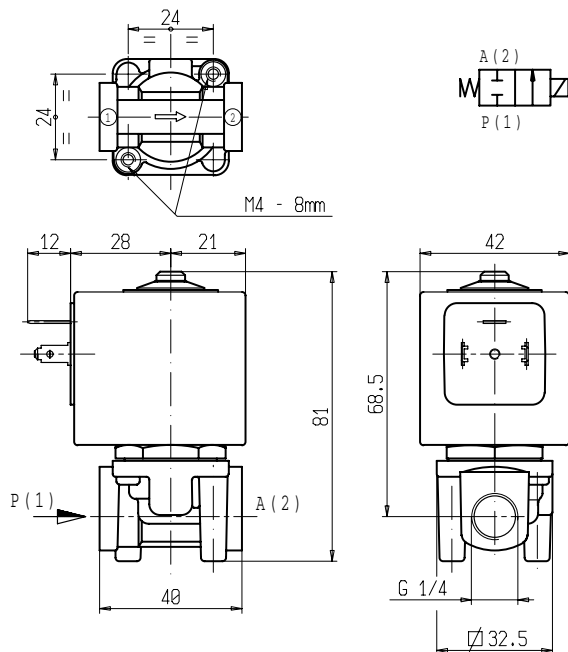


L159



► GENERAL FEATURES

Direct acting solenoid valve.

Suitable to shut off liquid and gaseous fluids; particularly suitable to shut off overheated water and steam (verify the compatibility of fluid with materials in contact).

► TECHNICAL FEATURES

Maximum allowable pressure (PS)	40 bar
Opening time	~30ms
Closing time	~30ms
Fluid temperature	-10°C +170°C
Max viscosity	5°E (~37 cStokes or mm ² /s)

► MATERIALS IN CONTACT WITH FLUID

<i>Body</i>	Brass
<i>Sealing</i>	Ruby
<i>Internal components</i>	Stainless steel
<i>Seat</i>	Stainless steel
<i>Core tube</i>	Stainless steel
<i>Shading coil</i>	Copper

► COIL

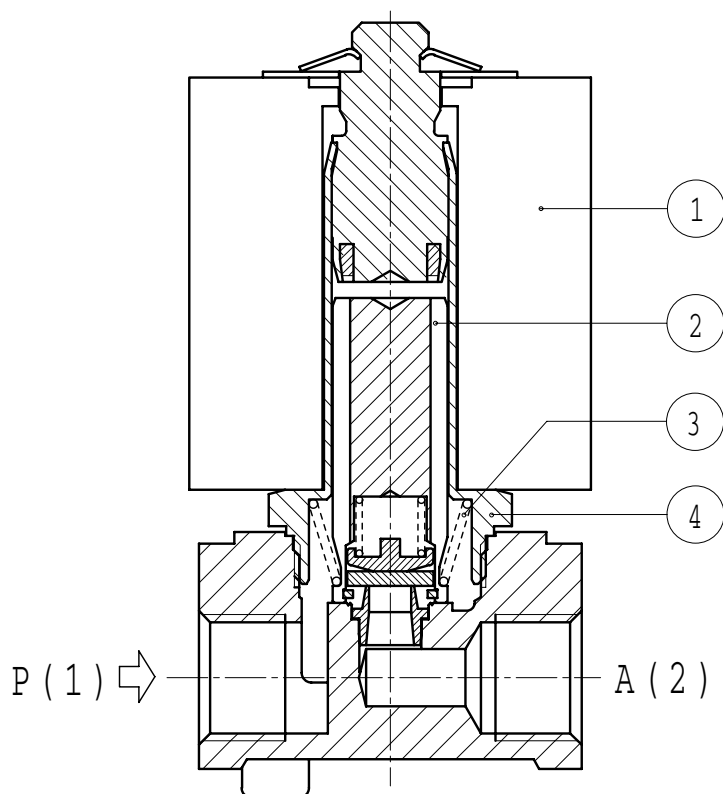
Continuous duty	ED 100%
Encapsulation material	PET (polyethylene terephthalate) fiberglass reinforced
Insulation class	H (165°C) - UL
Ambient temperature	-10 C° +80 °C
Electric connenctions	DIN 46340 - 3 poles plug connector (DIN 43650)
Protection degree	IP 65 (EN 60529) with plug connector
Voltages	DC 12-24V (+10% -5%)
AC	24V/50Hz - 110V/50Hz (120V/60Hz)
	230V/50Hz (+10% -15%)
	(Other voltages and frequencies on request).

Port size ISO 228	Ø Int. (mm)	Differential pressure (bar)					Kv (m³/h)	Series and type		Power absorption			Sealings	Notes	Weight (kg)
		Δp min	Δp max												
			Gas		Liquids										
			AC	DC	AC	DC		Valve	Coil	AC (VA)		c.c. (W)			
Inrush	Holding														
G 1/4	3	0	30	17	30	17	0,25	L159C05	Z134A	44	24	13	RUBY	1-2	0,500
	4,5		12	4	12	4	0,45								

► NOTES

- Sealings : RUBY = Synthetic corundum
- The use of rigid sealings with gaseous fluids implies a slight leakage, generally limited within 2 scc/min. at 1 bar pressure
- 1 - Only for use with steam, consider following values: max pressure 8 bar (max temperature of fluid 170°).
- 2 - On request coil type Z130A (PET Polyethylene terephthalate) class "F" (+140°C), maximum ambient temperature +60°C.

► SPARE PARTS



Kit description

Core kit

Core return spring kit

Guide assembly

Coil Z134A

Kit P.N.

G2877401

G2866801

3077901R

Consisting of:

Core (with core return spring) pos. 2

N.10 core return spring pos. 3

Guide assembly pos. 6

Coil pos. 1

► INSTALLATION

Solenoid valve can be mounted in any position; vertical with coil upwards preferred.