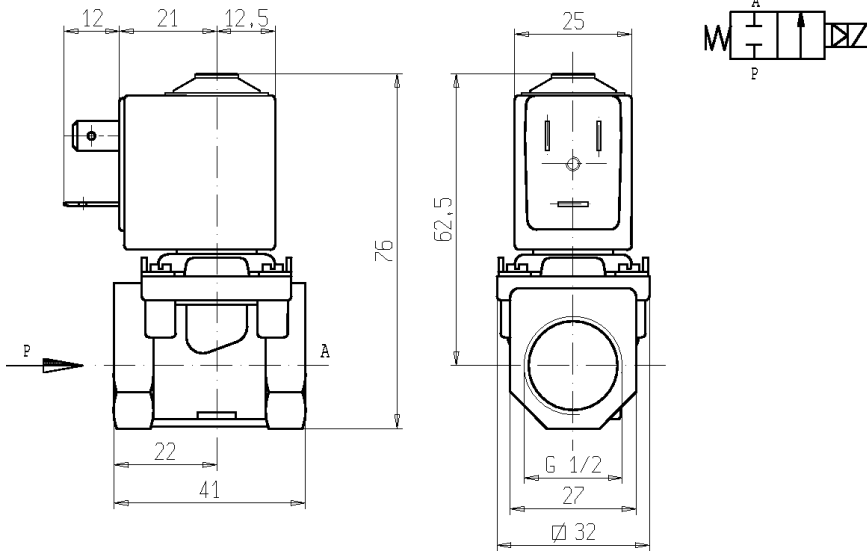




**SOLENOID VALVE**  
**2/2 - NC (Normally closed)**  
**Pilot operated**  
**G1/2**

**L140**



► **GENERAL FEATURES**

Diaphragm valve, pilot operated, having full orifice.  
 Suitable to shut off liquid and gaseous fluids (verify the compatibility of fluid with materials in contact).

► **TECHNICAL FEATURES**

Maximum allowable pressure (PS) 16 bar  
 Opening time ~30ms  
 Closing time ~50ms  
 Fluid temperature -10°C +90°C (NBR)  
 0°C +130°C (FPM)  
 Max viscosity 5°E (~37 cStokes or mm<sup>2</sup>/s)

► **MATERIALS IN CONTACT WITH FLUID**

Body Brass  
 Sealing NBR or FPM  
 Internal components Stainless steel and POM (acetel copolymer)  
 Seat Brass  
 Guide assembly Stainless steel  
 Shading ring Copper

► **COIL**

Continuous duty ED 100%  
 Encapsulation material PET (polyethylene terephthalate) fiberglass reinforced  
 Insulation class F (155 °C) on request class H (180°C) - UL  
 Ambient temperature -10 C° +60 °C  
 Electric connenctions DIN 46340- 3 poles connectors  
 Protection degree IP 65 (EN 60529) with plug connector  
 Voltages 24V/50-60Hz - 110V/50-60Hz (120V/60Hz)  
 (Other voltages and frequencies on request).

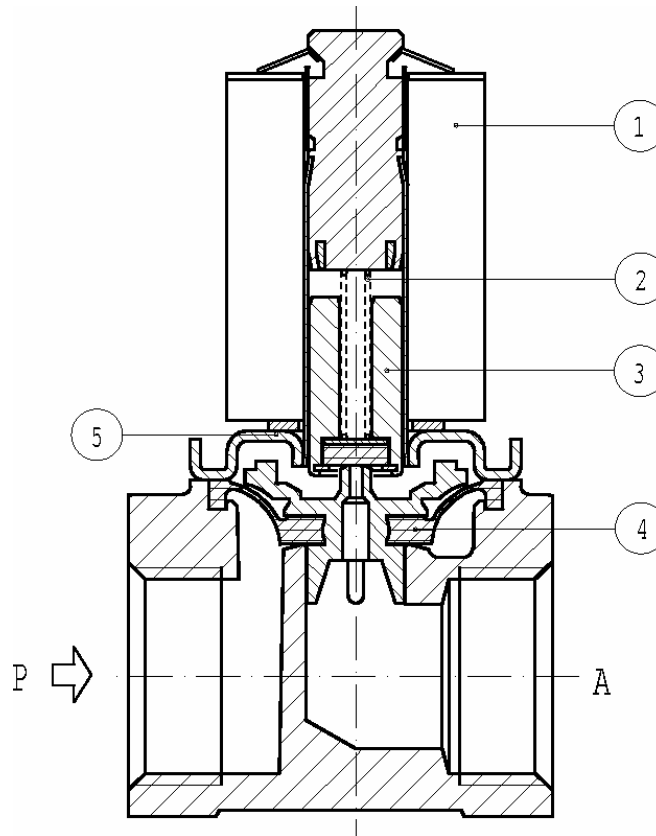
Port size ISO 228	Ø Int. (mm)	Differential pressure (bar)				Kv (m <sup>3</sup> /h)	Series and type		Power absorption			Sealings	Notes	Weight (kg)	
		Δp min	Δp max		Valve		Coil	AC (VA)		c.c. (W)					
			Gas	Liquids				Inrush	Holding						
			c.a.	c.c.	c.a.	c.c.									
G 1/2	10	0,35	10	-	10	-	1,5	L140B5	Z610A	16	10	-	NBR	1	0,270
								L140V5					NBR		
								L140B7					NBR		

► **NOTES**

- Sealings : NBR = Nitrile-butylene elastomer FPM = Fluoro-carbon elastomer
- Continuous changements of pressure may reduce the life of the diaphragm.
- 1 - The Δp max value is valid only for 50Hz; for operation at 60Hz, Δp max is 5 bar.
- 2 - Chemically nickel plated core (Ni-P).
- 3 - Model available on request only: ask for minimum quantity.

# L140

## ► SPARE PARTS



### Kit description

Core kit

L140B5  
L140V5  
L140B7

### Kit P.N.

G2851701  
G2851702  
G2851703

### Consisting of:

Core pos. 3  
Core return spring pos. 2

Core return spring kit

G2733901

N.10 Core return springs pos. 2

Diaphragm assembly

L140B5 – B7  
L140V5

2706503R  
2706504R

Diaphragm assembly pos. 4

Guide pipe assembly

2733801R

Guide pipe assembly pos. 5

Coil

Z610A

Coil pos. 1

## ► MOUNTING

Solenoid valve can be mounted in any position; vertical with coil upwards preferred.