

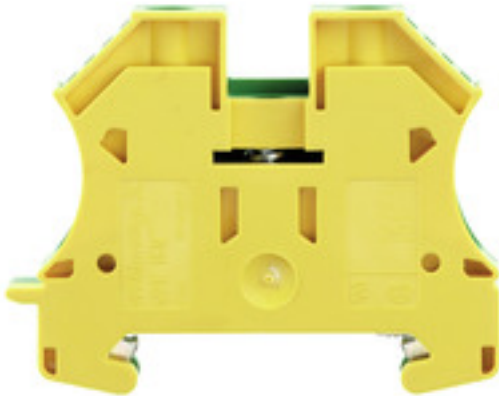
WPE 16N**Weidmüller Interface GmbH & Co. KG**

Klingenbergstraße 26

D-32758 Detmold

Germany

www.weidmueller.com

Product image

A protective feed through terminal block is an electrical conductor for the purpose of safety and is used in many applications. To establish the electrical and mechanical connection between copper conductors and the mounting support plate, PE terminal blocks are used. They have one or more contact points for connection with and/or bifurcation of protective earth conductors.

General ordering data

| | |
|------------|--|
| Version | PE terminal, Screw connection, 16 mm ² , 1920 A (16 mm ²), Green/yellow |
| Order No. | 1019100000 |
| Type | WPE 16N |
| GTIN (EAN) | 4008190273248 |
| Qty. | 50 pc(s). |

Creation date August 1, 2023 8:29:29 AM CEST

Catalogue status 24.07.2023 / We reserve the right to make technical changes.

WPE 16N

Weidmüller Interface GmbH & Co. KG

Klingenbergstraße 26

D-32758 Detmold

Germany

www.weidmueller.com

Technical data

Dimensions and weights

| | | | |
|--------------------------|------------|----------------|------------|
| Depth | 46.5 mm | Depth (inches) | 1.831 inch |
| Depth including DIN rail | 47 mm | Height | 56 mm |
| Height (inches) | 2.205 inch | Width | 12 mm |
| Width (inches) | 0.472 inch | Net weight | 33.98 g |

Temperatures

| | | | |
|----------------------------------|----------------|----------------------------------|--------|
| Storage temperature | -25 °C...55 °C | Continuous operating temp., min. | -50 °C |
| Continuous operating temp., max. | 130 °C | | |

Material data

| | | | |
|---------------------------|-------|--------|--------------|
| Material | Wemid | Colour | Green/yellow |
| UL 94 flammability rating | V-0 | | |

System specifications

| | | | |
|-------------------------------------|---|-------------------------------|-----|
| Version | Screw connection, With PE connection, in closed state | End cover plate required | No |
| Number of potentials | 1 | Number of levels | 1 |
| Number of clamping points per level | 2 | Number of potentials per tier | 1 |
| Levels cross-connected internally | No | PE connection | Yes |
| Rail | TS 35 | N-function | No |
| PE function | Yes | PEN function | Yes |

Additional technical data

| | | | |
|--------------------------|------------------|-----------------------------|-----------------|
| Explosion-tested version | No | Installation advice | when screwed in |
| Interlock | for screw fixing | Number of similar terminals | 1 |
| Open sides | closed | Type of mounting | when screwed in |

CSA rating data

| | | | |
|-------------------------------|----------------|-------------------------------|-------|
| Certificate No. (CSA) | 200039-1057876 | Wire cross section max. (CSA) | 6 AWG |
| Wire cross section min. (CSA) | 14 AWG | | |

WPE 16N

Weidmüller Interface GmbH & Co. KG

Klingenbergstraße 26

D-32758 Detmold

Germany

www.weidmueller.com

Technical data

Conductors for clamping (rated connection)

| | | | |
|---|---------------------|---|---------------------|
| Blade size | 1.0 x 5.5 mm | Clamping range, max. | 25 mm ² |
| Clamping range, min. | 1.5 mm ² | Clamping screw | M 4 |
| Connection cross-section, stranded, max. | 25 mm ² | Connection cross-section, stranded, min. | 1.5 mm ² |
| Connection direction | on side | Gauge to IEC 60947-1 | B7 |
| Number of connections | 2 | Stripping length | 12 mm |
| Tightening torque, max. | 2.4 Nm | Tightening torque, min. | 1.2 Nm |
| Type of connection | Screw connection | Wire connection cross section AWG, max. | AWG 6 |
| Wire connection cross section AWG, min. | AWG 14 | Wire connection cross section, finely stranded, max. | 16 mm ² |
| Wire connection cross section, finely stranded, min. | 1.5 mm ² | Wire connection cross-section, finely stranded with wire-end ferrules DIN 46228/1, max. | 16 mm ² |
| Wire connection cross-section, finely stranded with wire-end ferrules DIN 46228/1, min. | 1.5 mm ² | Wire connection cross-section, finely stranded with wire-end ferrules DIN 46228/4, max. | 16 mm ² |
| Wire connection cross-section, finely stranded with wire-end ferrules DIN 46228/4, min. | 4 mm ² | Wire connection cross-section, solid core, max. | 16 mm ² |
| Wire connection cross-section, solid core, min. | 1.5 mm ² | | |

Dimensions

| | |
|--------------|-------|
| TS 35 offset | 32 mm |
|--------------|-------|

General

| | | | |
|---|-----------------|---|-------|
| Installation advice | when screwed in | Rail | TS 35 |
| Standards | IEC 60947-7-2 | Wire connection cross section AWG, max. | AWG 6 |
| Wire connection cross section AWG, min. | AWG 14 | | |

PE rating data

| | | | |
|--|------------------------------|------------------------------|-----|
| Rated short-time current | 1920 A (16 mm ²) | Centre screw on PE terminals | M 3 |
| Tightening torque range for fixing screw | 0.5...1.0 Nm | PEN function | Yes |

Rating data

| | | | |
|--|--------------------|--|---------|
| Rated cross-section | 16 mm ² | Rated voltage to adjoining terminal | 400 V |
| Standards | IEC 60947-7-2 | Volume resistance according to IEC 60947-7-x | 0.42 mΩ |
| Rated impulse withstand voltage to adjacent terminal | 6 kV | Power loss in accordance with IEC 60947-7-x | 2.43 W |
| Pollution severity | 3 | | |

UL rating data

| | | | |
|---|--------|---|-------|
| Certificate No. (UR) | E60693 | Conductor size Factory wiring max. (UR) | 6 AWG |
| Conductor size Factory wiring min. (UR) | 14 AWG | Conductor size Field wiring max. (UR) | 6 AWG |
| Conductor size Field wiring min. (UR) | 14 AWG | | |

WPE 16N

Weidmüller Interface GmbH & Co. KG

Klingenbergstraße 26

D-32758 Detmold

Germany

www.weidmueller.com

Technical data

Classifications

| | | | |
|-------------|-------------|-------------|-------------|
| ETIM 6.0 | EC000901 | ETIM 7.0 | EC000901 |
| ETIM 8.0 | EC000901 | ECLASS 9.0 | 27-14-11-41 |
| ECLASS 9.1 | 27-14-11-41 | ECLASS 10.0 | 27-14-11-41 |
| ECLASS 11.0 | 27-14-11-41 | ECLASS 12.0 | 27-14-11-41 |

Approvals

Approvals



| | |
|-----------------------|------------|
| ROHS | Conform |
| UL File Number Search | UL Website |
| Certificate No. (UR) | E60693 |

Downloads

| | |
|---|--|
| Approval/Certificate/Document of Conformity | CE Declaration of Conformity CE Declaration of Conformity all terminals UKCA declaration of conformity |
| Engineering Data | CAD data – STEP |
| Engineering Data | WSCAD, Zuken E3.S, EPLAN |
| User Documentation | StorageConditionsTerminalBlocks Instruction |
| Catalogues | Catalogues in PDF-format |
| Brochures | |

Data sheet

WPE 16N

Weidmüller Interface GmbH & Co. KG
Klingenbergstraße 26
D-32758 Detmold
Germany

www.weidmueller.com

Drawings

