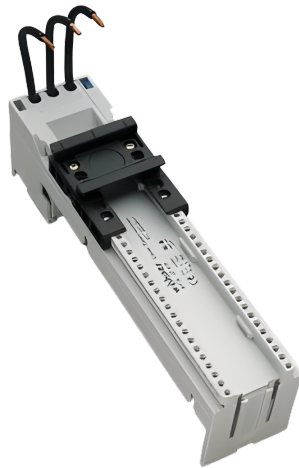


busbar adapter 25 A (32430)



The picture may show a similar product.

Description

Part No.: **32430 000**

EQUES® 60Classic

busbar adapter 25 A

1 adjustable mounting rail

45 x 200, with leads AWG 12 (4 mm²)

for busbars 12, 15, 20, 25, 30 x 5, 10 and section busbars

System

60Classic

Advantages of the product

Conductor ends ultrasonically sealed.

Click mechanism when pushing onto the busbar.

Product group 05

Subgroup 21

pack size 4

EAN 4021267324308

ETIM 5.0 EC001531

ETIM 8.0 EC001531

Approvals

Standards

IEC 61439-1:2020

UL 508

Approvals

CSA , UL , DNV GL



for UL feeder circuits >250V

type number: EEC6025-L

UL file: E123577, UL category (for USA): NMTR <https://www.ul.com>

UL file: E123577, UL category (for Canada): NMTR7 <https://www.ul.com>

CSA file: 110285, CSA class: 3211-37 <https://directories.csa-international.org>

CCC approval: no certification required

Technical data

Details IEC

Standards

IEC 61439-1:2020

Electrical data IEC

rated current (IEC): 25 A

rated voltage (IEC) AC: 690 V

rated isolation voltage U_i AC: 800 V

rated surge voltage U_{imp} : 6 kV

Motorschutzscharter bis 25 A:

50 kA @ 600 V / Durchlassstrom 7 kA

Motorschutzscharter bis 32 A:

25 kA @ 480 V / Durchlassstrom 9 kA

power dissipation of the article:

The power dissipation at a typical load of 80 % results to 1.2 W.

(The power dissipation at full load would be 1.9 W.)

Supplementary data IEC

The following values have been verified with tests under certain conditions. Please ask Wöhner for this conditions before designing your panel.

min. permitted operation temperature -40°C

Details UL

Standards

UL 508

for UL feeder circuits >250V

Electrical data UL

rated current (UL): 25 A

rated voltage (UL) AC: 600 V

rated frequency (UL): 50 / 60 Hz

SCCR unprotected max.: 5 kA

3 cycles (without OPD) @ 600 V AC

SCCR protected max.: 65 kA

SCCR: 50 kA with any NKJH Comb. Motor Controller 32 A / 480 V AC

65 kA with any NKJH Comb. Motor Controller 16 A / 480 V AC

30 kA with any NKJH Comb. Motor Controller 12,5 A / 600 V AC

65 kA with any NKJH Comb. Motor Controller 25 A / 480 V AC

Mechanical data

W x H x D: 45 x 200 x 63
weight: 32.5 kg/100
poles: 3-pole
for busbars: 12, 15, 20, 25, 30 x 5, 10 and section busbars

Terminal points

with leads
AWG12 (4 mm²)
wire stripping: 9 mm

Material properties

halogen-free: Yes

Application notes

There must be a clearance of at least 12 mm above the article to remove it from the busbar system.
For compact mounting of complete motor circuits with commercially available switchgear and safe mechanical and electrical connection to the busbar system.
the short-circuit capacity of the combination of adapter and motor starter depends on the motor starter
for UL feeder circuits >250V

Accessories

accessories for mounting



32969 000

mounting rail end stop
for adjustable mounting rails

connection accessories



32511 000

8-pole connector, with support, 250 V
for mounting on adapters

further accessories



32947 000

mounting rail 45 mm
for busbar adapters



32963 000

side-mounted module for busbar adapters
attachable to both sides
9 x 200
for: EEC60..



32979 000A

positioning piece for Eaton PKZ
for 45mm wide adapters with adjustable mounting rails



32952 000A

positioning piece for Siemens S00 and S0
for 45mm wide adapters with adjustable mounting rails

<https://pim.woehner.de/EN/US/1000042692>