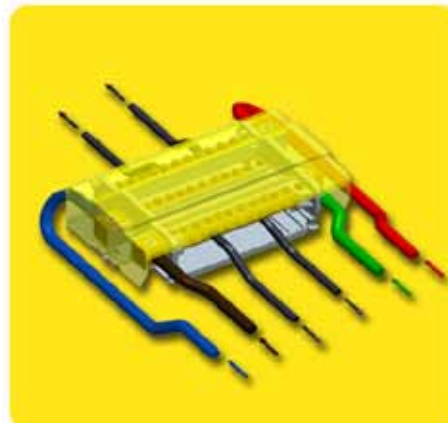


Distribution Block UP & DOWN 160A Modular 4-poles



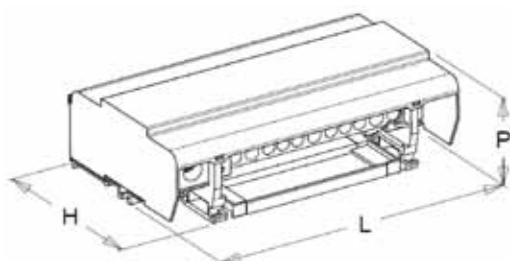
The innovative modular **Up & Down Distribution Block** allows easy and tidy cabling when the operator meets articulated but limited in rooms conditions, i.e. when all inputs and outputs are too many to be entered on one side only.

The **RPQ1016 Up & Down** splits the input and output phases on two sides. In fact, the device has got two input poles on upper side and two on down side; same for outputs.

Nevertheless, if necessary, the 4 input cable only might be entered all from one side.

Electrical Characteristics

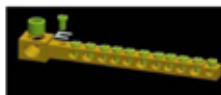
- **Modular device complying to standard IEC 947-1 e IEC 947-7-1.**
- Short duration admissible nominal current **I_{cn} = 6 kA.**
- Short duration admissible peak current value **I_{pk} = 22 kA.**
- Insulation Voltage **U_i = 600 V.**



Partnumber	Reference		L mm	P mm	H mm
RPQ1016	RPQ160-11	1	177	56	105

Physical Characteristics

- **Forged Brass Bars**, one body, for an increased electrical safety.

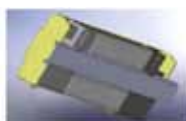


- **Separate inputs** from outputs, for an increased operator safety.



- Self Extinguishable structure **UL94V0.**

- **Quick connect on DIN rail.**



IN/OUT	Nr	Stripped cable mm ²	Cable with ferrule mm ²
IN --->	1	10 - 50	10 - 50
<-- OUT	8	2,5 - 16	1,5 - 16
<-- OUT	3	10 - 35	10 - 25