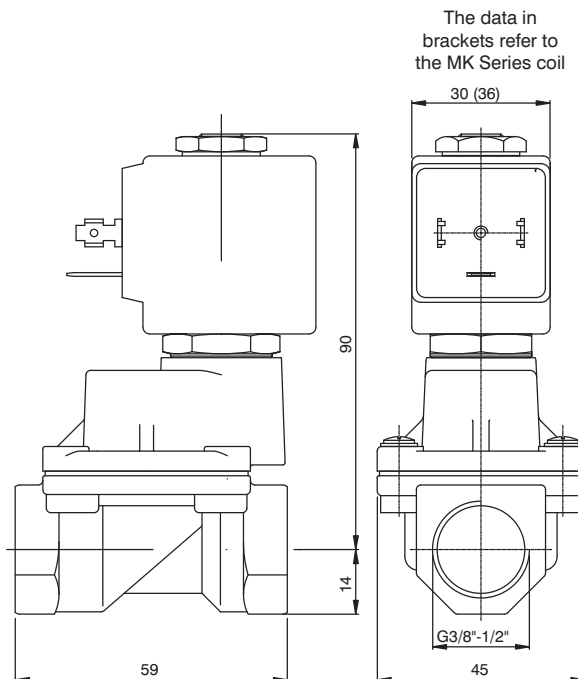




Solenoid valves for fluids - F3119

Brass body, with G connector (ISO228) 3/8" - 1/2"

2-way normally closed, servo-actuated piston solenoid valve

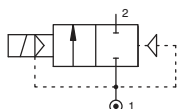


CODE "V"=Seals in FPM "E" = Coil	Connection G ISO 228	Orifice (mm)	KV (m³/h)	Differential pressure (bar)			Power Consumption			Coil Ⓜ		Temp. range (°C)
				Min	Max		AC Inrush	VA Holding	DC Watt	Series	Size	
					AC	DC						
F3119CV12Ⓜ	3/8"	12	2	1	30	30	20	15	10	MG	30	-10 +140
F3119DV12Ⓜ	1/2"	12	2.2	1	30	30	20	15	10	MG	30	
F3119CV12/1Ⓜ	3/8"	12	2	1	50	30	40	30	27	MK	36	
F3119DV12/1Ⓜ	1/2"	12	2.2	1	50	30	40	30	27	MK	36	

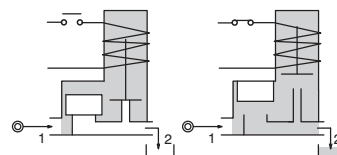
Example: F3119DV12b => F3108DV12MG5:

2-way normally closed servo-actuated piston solenoid valve in brass with Connector G (ISO228) 1/2", Seals in FPM, Orifice 12 mm, Coil 24V DC (MG5, size 30).

Pneumatic symbol



Diagram



Operational characteristic

- Body and cover in Brass
- Guide pipe in Stainless Steel
- Mobile and fixed core in Stainless Steel
- Springs in Stainless Steel
- Piston in Brass.
- Guide slide in loaded PTFE.
- Main shutter in PTFE.
- Remaining sealing elements in FPM..
- **OPTIONS (if requested):**
- Surface treatment in chemical nickel-plating

Technical characteristic

Minimum differential pressure (bar)	1
Maximum admitted pressure (bar)	40
Maximum running pressure Version /1 (bar)	60
Maximum fluid viscosity (mm²/s)	25cSt
Ambient temperature: with class F coil (°C)	-10 +55
Ambient temperature: with class H coil (°C)	-10 +80
Mounting position	Preferably with coil upwards
Weight (gr.) with MG Series Coil	630
Weight (gr.) with MK Series Coil	710