



E5EC-RX4A5M-000

Temp. controller, PRO, 1/8 DIN (96x48mm), 1 x Rel. OUT, 4 AUX, 100-240 VAC

Specifications

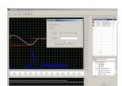
Size	1/8 DIN (96 x 48 mm)
Functions	ON/OFF control, PID control
Number of control loops	1
Temperature input type	B, C (WRe5-26), E, J, JPt100, K, L, N, P (PLII), Pt100, R, S, T, U
Linear analog input type	0 to 10 V, 0 to 20 mA, 0 to 5 V, 1 to 5 V, 4 to 20 mA
Temperature range	-200-2300 °C
Number of event inputs	0
Number of alarm outputs	4
Supply voltage AC	100-240 V
Control output	Relay
Terminal type	Screw

Accessories



E58-CIFQ2

E5CB & E5CC and E5EC* accessory, quick link programming cable, allows direct USB connection without requirement for communications card or power supply. Also the display will be powered (CX-Thermo v4.4 is needed). *For E5EC front connection.



EST2-2C-MV4

CX-Thermo, direct 1 to 1 connecting software (1 to several if same TC type), for programming and monitoring E5_N (version 5 & 6), E5ZN and CelciuX (EJ1)