

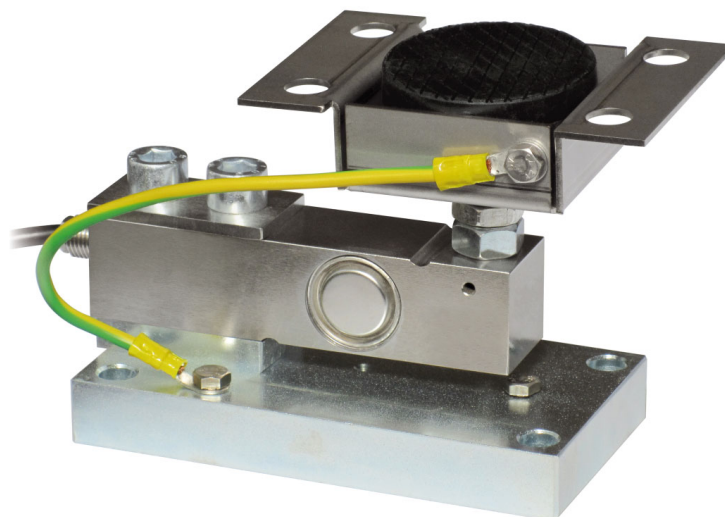
# PV - PVZ

MOUNTING KIT for SHEAR BEAM load cells

LAUMAS®

Series load cells: FTK - FTKL - FTP - FT-P - FTZ

Up to 2000 kg application range



MAX STATIC LOAD kg	FOR LOAD CELLS	NET WEIGHT (kg)	CODE
2000	FTK - FTKL - FTP - FT-P - FTZ	2.7	PV
2000	FTK - FTKL - FTP - FT-P - FTZ	2.7	PVZ

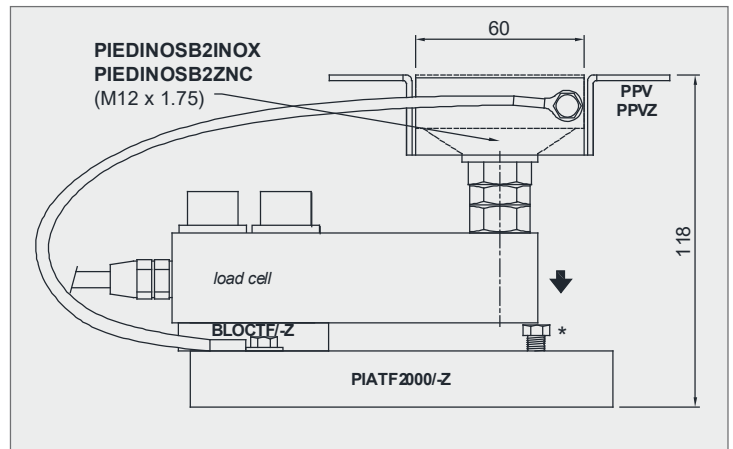
Load cell not included.

## DESCRIPTION

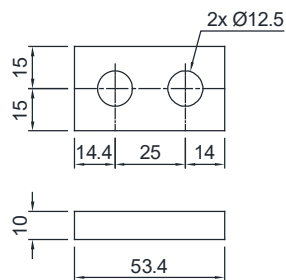
- Adjustable upper plate in AISI 304 stainless steel (PPV) or galvanized steel (PPVZ).
- Lower plate and block in AISI 304 stainless steel (PV) or galvanized steel (PVZ).
- Constraint against lateral forces and anti-tilt by AISI 304 stainless steel (TFPV, TFPV2000) or galvanized steel (TFPVZ) self-centering joint foot.
- Compensation for any misalignments of the support plates of the structure.
- Adjustable height.
- Locking screw to avoid damage during transport and installation.

### DIMENSIONS AND TECHNICAL SPECIFICATIONS

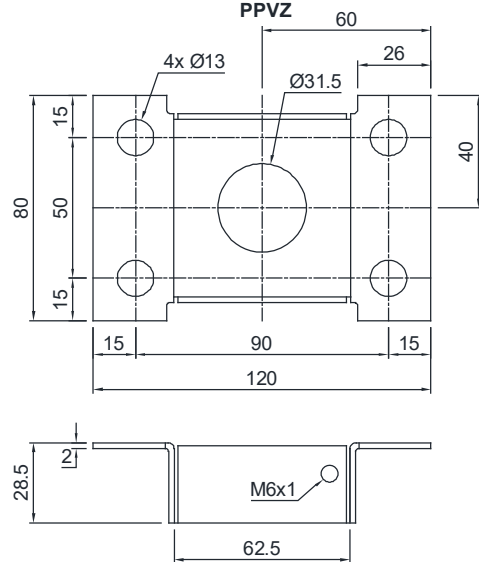
- During the transport and installation the lock (\*) must touch under the load cell. After installation, move the lock away from the load cell.
- Interconnect the plates to the earthing.
- In case of structure with four-point support, if one-point does not touch the upper part of the mounting kit, you must proceed to insert a shim before fixing the bolts.
- For the load cell fixing screws (\*), provide a tightening torque of 50 Nm for PV and 79 Nm for PVZ.



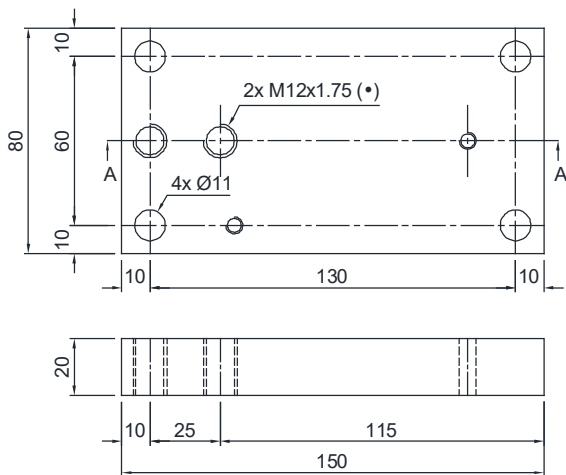
**BLOCTF  
BLOCTFZ**



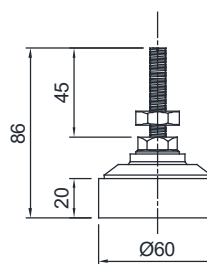
**PPV  
PPVZ**



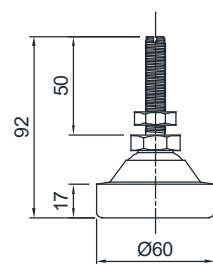
**PIATF2000  
PIATF2000Z**



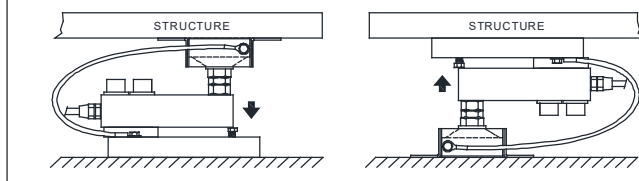
**PIEDINOSB2ZNC  
M12x1.75**



**PIEDINOSB2INOX  
M12x1.75**



**FIXING TO THE WEIGHED STRUCTURE**



**POSSIBLE UPPER PLATE POSITIONS**

