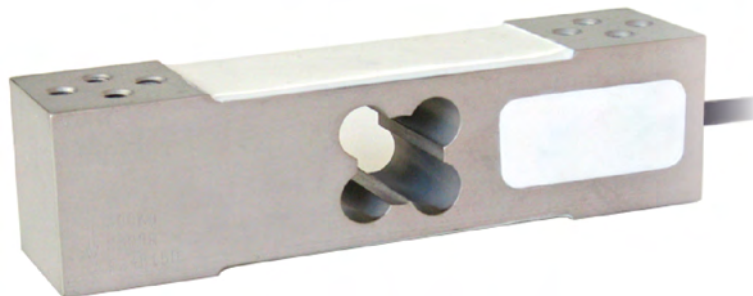
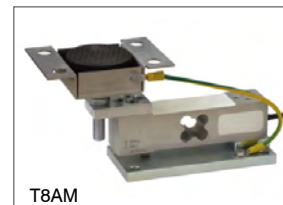




Capacity from 60 kg to 300 kg



MOUNTING KIT



T8AM

It can be used for systems with at least 3 load cells connected in parallel

- ALUMINUM ALLOY
- COMBINED ERROR $\leq \pm 0.02\%$ (0.017% C4; 0.014% C5)
- PROTECTION CLASS IP65

CAPACITY	kg	ACCURACY CLASS					PLATFORM (mm)	NET WEIGHT (kg)	CODE
		C3	C4	C5					
60		•	•	–	•	•	400 x 400	0.6	AM60
100		•	•	–	•	•	400 x 400	0.6	AM100
150		•	•	–	•	•	400 x 400	0.6	AM150
200		•	•	–	•	•	400 x 400	0.6	AM200
300		•	•	•	•	•	400 x 400	0.6	AM300

ON REQUEST

CERTIFICATIONS

- OIML R60 C3
- Complies with the Eurasian Customs Union standards
- Equivalent of the CE marking for the United Kingdom
- Complies with United Kingdom regulations for legal for trade use

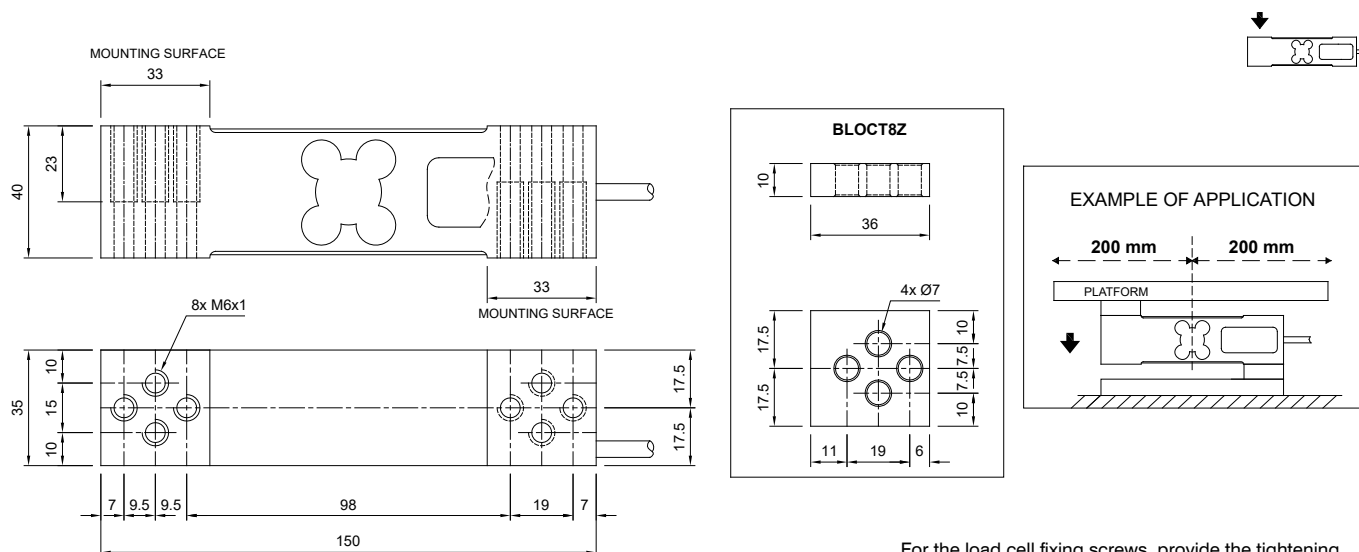
CERTIFICATIONS ON REQUEST

- ATEX II 1GD (zone 0-1-2-20-21-22) (CE - UK CA)
- IECEx (zone 0-1-2-20-21-22)
- OIML R60 C4/C5
- Complies with the Eurasian Customs Union standards for use in potentially explosive atmospheres
- NTEP - Complies with United States regulations for legal for trade use

COMPLEMENTARY ACCESSORIES

	DESCRIPTION	CODE
	Stainless steel and rubber waterproof kit.	IP68AMPRE
	Galvanized steel drawn block.	BLOCT8Z

DIMENSIONS (mm)



For the load cell fixing screws, provide the tightening torque indicated in the table

Screw	M6	
Screw class	6.8	8.8
Tightening torque	7.5 Nm	10 Nm

TECHNICAL FEATURES

Material	Aluminum alloy		
OIML R60 Accuracy class • Verification intervals	C3 • 3000	C4 • 4000	C5 • 5000
Nominal load (E max)	60 - 100 - 150 - 200 - 300 kg		300 kg
Minimum verification interval (V min)	E max / 10000	E max / 15000	E max / 20000
Combined error	≤ ±0.02%	≤ ±0.017%	≤ ±0.014%
Protection class	IP65		
Rated output	2 mV/V ±10%	Input resistance	406 Ω ±6
Temperature effect on zero	0.003% °C	Output resistance	350 Ω ±3
Temperature effect on span	0.002% °C	Zero balance	≤ ±2%
Compensated temperature range	-10 °C / +40 °C	Insulation resistance	≥5000 MΩ
Operating temperature range	-35 °C / +65 °C	Safe overload (% of full scale)	150%
Creep at nominal load in 30 minutes	0.025%	Ultimate overload (% of full scale)	300%
Max supply voltage without damage	18 V	Deflection at nominal load	0.5 mm

ELECTRICAL CONNECTIONS

Cable length	3 m
Cable diameter	5 mm
Cores	4 x 0.20 mm ²

