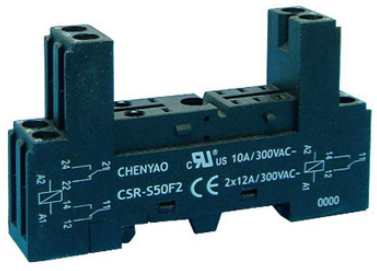


# CSR-S50F2





### Main Feature

- Socket with screw terminal.
- No reduction of protection class or creepage/clearance with plastic retainer.
- Easy replacement of relays.
- Retainer clip with ejection function for relays of 16, 20 or 25mm height.
- Socket can be used as connector for diagnosis function.
- Sockets and accessories: RoHS compliance (Directive 2002/95/EC).
- Socket with screw-type terminal for DIN-rail mounting.

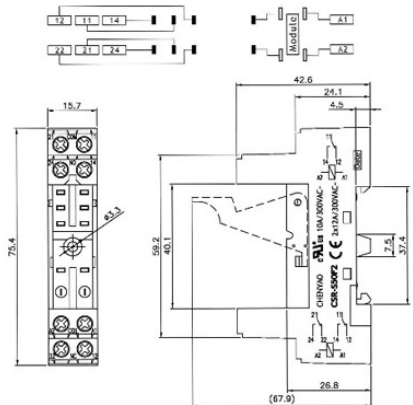
### Specifications

Rated current.....12A  
 Rated voltage / max. Switching voltage AC.....300VAC  
 Dielectric strength coil-contact circuit.....4,000V<sub>rms</sub>  
 Clearance / creepage coil-contact circuit.....≥4/4mm  
 Material group of insulation parts.....≥IIIa  
**Insulation to IEC 60664-1**  
 Type of insulation coil-contact circuit.....basic  
 Open contact circuit.....functional  
 Rated insulation voltage.....250V  
 Pollution degree.....2  
 Rated voltage system.....230/400V  
 Over voltage category.....III  
**RoHS Directive 2002/95/EC**  
 Sockets, retainers and marking tag:.....compliant  
 Degree of protection DIN 40050.....IP20  
 Ambient temperature range.....-25...+70 °C  
 Terminals.....screw  
 Terminal screw torque acc. IEC 61984.....0.5Nm  
 Max.....0.7Nm  
**Wire cross section**  
 Single wire.....2X2.5mm<sup>2</sup>  
 Fine wire.....2x2.5mm<sup>2</sup>  
 With bootlace crimp (DIN 46228/1).....2x1.5mm<sup>2</sup>  
 Insertion cycles.....A (10)  
 Max. Insertion Force total.....100N  
 Mounting distance.....0, dense packing  
 Weight.....31g  
 Packaging unit.....20 pcs.

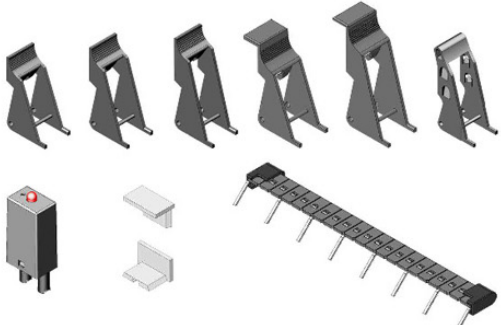


UL/CUL No: E306487, CSA No: 2347925

### Dimensions



### Accessories



### Order Information

**CSR - S 50 F 2 - □**

Special remark	Nil (for standard) R (for level function different)
Insulation levels	F2 (for two levels) F3 (for three levels)
Terminal pitch	3S (for 3.5mm terminal pitch) 50 (for 5.0mm terminal pitch)
Contact form	P (for PCB terminal) S (for screw type) C (for cage clamp type)
Item	CSR